

# RHEA's Cyber-Range for Training

The nature, sophistication and frequency of cyberattacks continue to escalate, creating a challenge for leaders and boards of directors. When an attack or breach occurs, it is important to ensure your IT and security teams are ready to respond quickly and mitigate the impact.

The challenge is that not many professionals have the opportunity to train on real-life attacks. Hands-on training can help improve response times in high pressure situations and, according to the National Institute of Standards and Technology (NIST)<sup>1</sup> cyber-ranges provide a safe, legal environment to gain those hands-on cyber skills.

## What is a cyber-range?

A cyber-range lets you rapidly create a representation of your environment, where attacks and breaches can be simulated.

## Why RHEA's cyber-range?

RHEA's cyber-range goes even further, allowing you to create an exact emulation of your environment – a digital twin. This provides the most realistic, safe and efficient training environment for your IT and security teams.



### Train on what matters the most – your own infrastructure

Flexibility to create a true emulation of your exact environment. Replicate your entire infrastructure, including your own applications, protocols and configuration, using our asset library.



### Asset library

Quickly customize your environment by using assets from our library of IT and OT assets, or upload elements that are unique to your own organization.



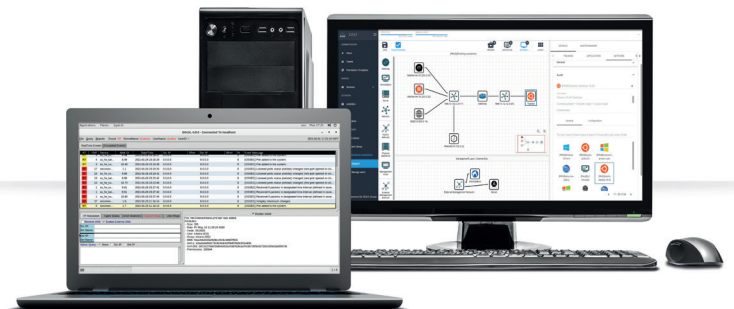
### Automate your attack scenarios

As your teams develop their skill sets, trainers can evolve training sessions to the next level with the timeline feature. Setting your attacks based on a timeline enables trainers to create more complicated and sophisticated attacks, pushing learning to the limit.



### Track your team's skills development

Generate reports directly from the cyber-range to measure progress and integrate with a learning management system (optional).



Source: 1. The Cyber Range: A Guide; NIST



RHEA Inc. specializes in cyber and physical security, information technology, systems engineering and software development, and technical support. It is headquartered in Montréal, Quebec, and has an office in the National Capital Region (NCR) in Gatineau, Quebec. RHEA Inc. has over 12 years' experience in providing security services, offering an unrivalled range of security solutions to support its clients from inception to implementation.

RHEA Inc. is RHEA Group's related Canadian organization. RHEA Inc. also operates APS Aviation Inc., an aviation industry leader working in support of aviation research advancement, engineering progress and technology innovation. RHEA Group is an international leader in security, space and system engineering. It is headquartered in Belgium and employs over 750 people who work in offices and at client sites across Belgium, France, Czech Republic, Italy, Germany, Spain, the Netherlands, Luxembourg, UK and Canada.

RHEA is ISO 9001 and ISO 27001 certified.

✉ [info@rheagroup.com](mailto:info@rheagroup.com)

🌐 [www.rheagroupcanada.ca](http://www.rheagroupcanada.ca)