

# RHEA's Cyber-Range for Testing

Across industries, organizations are accelerating digital business transformation for long-term growth and profitability. As the push for transformation continues, patching applications and integrating new systems becomes unavoidable. To keep up with the pace of change, organizations often opt to directly deploy new technologies and patches in live environments, shortcutting traditional testing practices that take too long.

The challenge then becomes the business risk associated with not testing these changes – for example down systems, security weaknesses and data loss. To help mitigate the risks, a cyber-range can provide a rapid and efficient testing tool.

## What is a cyber-range?

A cyber-range lets you rapidly create a simulation of your environment, where system and application changes can be safely and easily tested.

## Why RHEA's cyber-range?

RHEA's cyber-range goes even further. It allows you to create an exact emulation of your environment – a digital twin. This provides the most realistic, safe and efficient testing environment where you can test your systems and applications.



### Test for potential cybersecurity weaknesses

Automate MITRE ATT&CK techniques and build a set of test use cases for your environment, in a controlled way, to identify potential vulnerabilities before deployment.



### Asset library

Quickly customize your environment by using assets from our library of IT and OT assets, or upload elements that are unique to your own organization.



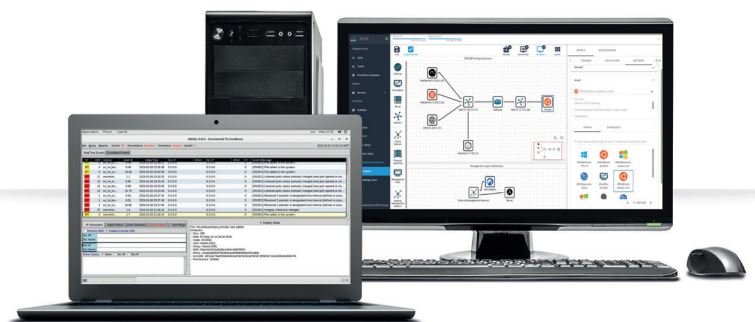
### Test on what matters the most – your own infrastructure

Flexibility to create a true emulation of your exact environment. Replicate your entire infrastructure, including your own applications, protocols and configuration, using our asset library.



### Run multiple tests at the same time

Build variations of the same environment (vendor, configuration, version, etc.), test them in parallel and identify which environment is most resilient.



RHEA Inc. specializes in cyber and physical security, information technology, systems engineering and software development, and technical support. It is headquartered in Montréal, Quebec, and has an office in the National Capital Region (NCR) in Gatineau, Quebec. RHEA Inc. has over 12 years' experience in providing security services, offering an unrivalled range of security solutions to support its clients from inception to implementation.

RHEA Inc. is RHEA Group's related Canadian organization. RHEA Inc. also operates APS Aviation Inc., an aviation industry leader working in support of aviation research advancement, engineering progress and technology innovation. RHEA Group is an international leader in security, space and system engineering. It is headquartered in Belgium and employs over 750 people who work in offices and at client sites across Belgium, France, Czech Republic, Italy, Germany, Spain, the Netherlands, Luxembourg, UK and Canada.

RHEA is ISO 9001 and ISO 27001 certified.

✉ [info@rheagroup.com](mailto:info@rheagroup.com)

🌐 [www.rheagroupcanada.ca](http://www.rheagroupcanada.ca)